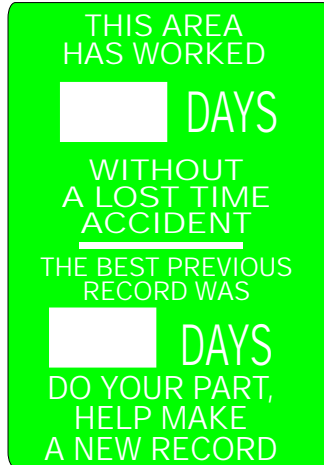




LOST TIME ACCIDENT SIGNS ARE MADE OF ALUMINUM, 28"x20" (INCHES) AND HAVE A DRY ERASE AREA FOR DRY MARKERS OR A STEEL PLATE (MAGNETIC AREA) FOR MAGNETIC NUMERALS.



28x20 A-L DRY ERASE LTA-710751
A-L STEEL PLATE LTA-710757



28x20 A-L DRY ERASE LTA-810951
A-L STEEL PLATE LTA-810957



28x20 A-L DRY ERASE LTA-811051
A-L STEEL PLATE LTA-811057



28x20 A-L DRY ERASE LTA-812351
A-L STEEL PLATE LTA-812357



28x20 A-L DRY ERASE LTA-710851
A-L STEEL PLATE LTA-710857



28x20 A-L DRY ERASE LTA-710951
A-L STEEL PLATE LTA-710957



28x20 A-L DRY ERASE LTA-812451
A-L STEEL PLATE LTA-812457



28x20 A-L DRY ERASE LTA-812551
A-L STEEL PLATE LTA-812557

ADDITIONAL MAGNETIC NUMBERS



2 1/2" ORANGE MAGNETIC NUMBERS FOR ABOVE MAGNETIC SIGNS
MG 0-9



PART#
LTA (Dry-Erase w/one dry erase pen - PEN-DR)

LTA (Magnetic w/two sets of MG 0-9 for LTA-710757, LTA-710857 & LTA-710957 and four sets of MG-09 for all others)

ADDITIONAL PENS



Dry erase black marking pen for writing on Lost Time Accident signs.

PEN-DR

Dial Safe Lost Time Accident Signs

Simply turn the dial to change the number of "SAFE DAYS" in your department.

Available in two sizes: 36"x24" and 28"x20"
Signs are manufactured of heavy duty plastic.



28"x20" LTA-719853

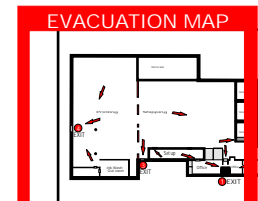
PART#
LTA-719853 (28x20)
LTA-71993 (36x24)



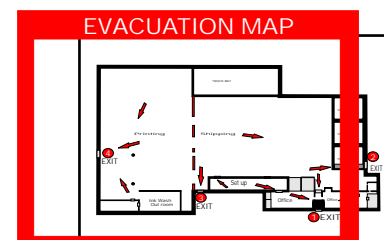
36"x24" LTA-71993

Map Holder

Insert your printed map into the map holder. Two adhesive strips on back for mounting to clean flat surface.



EM-085
10" X 12"
Clear Acrylic
for 8.5" x 11" map



EM-017
12.5" X 18.5" Clear Acrylic for 11" x 17" map



- If You Don't See It Just Ask!
- Custom Jobs Our Specialty...Please Call For A Quote!

1.800.527.8775

www.kcsupply.com

1.800.KC.SUPPLY